



KANNAS

INFORMATION PACK

Kannas Serviced Apartment
308 Moo 3, Tumbon Changpuak, Amphor Muang, Chiang Mai, Thailand 50300

WELCOME LETTER

Dear Guests,

First of all, may I take this opportunity to personally welcome you to THE KANNAS. We are delighted to accommodate you during your stay here in Chiang Mai and we really do hope that you will get the finest possible service from all of us.

As our apartments are decorated and set in a very residential setting to make you feel right at home, we have a set of guidelines and house rules to help you settle.

From over 60 years of experiences in our 3-generations of Chiang Mai based family-run furniture and real estate businesses, we have proudly launched “The Kannas” in February 2018 from our passion and love. We felt that whenever we travel abroad, we love to explore and live like a true local. However, when it comes to accommodations, we wanted a place that feel just like home and that is when we all agreed that serviced apartment is the answer. With the hope to make your stay more convenient, we create the on-site mini community mall with restaurants, a cafe, a perfume shop, an exercise studio, a convenience store and a pharmacy so that you would have no problems finding places to dine, to exercise and to relax.

Should you require any additional help or information during your stay, please do not hesitate to contact us directly at the reception or via kannaschiangmai@gmail.com.

Best Regards,

Nararat Tananuwat (MD)

Pikul Khadpab (GM)

Together with The Kannas Team

HOUSE RULES

CHECK-IN / CHECK-OUT

Check-in is from 2.00PM onwards and check-out is anytime up until 12.00PM on the day that the rental contract expires. If you wish to check-in earlier or leave a bit later, please kindly inform the reception at your earliest convenience and we will try our best to assist you.

In case no prior notice is given, late check-out between 1.00PM - 4.00PM will be charged an additional 50% of the nightly rental rate, while a late check-out after 4.00PM will be charged a 100% of the nightly rental rate.

APARTMENT KEYCARD

Please kindly look after your apartment keycard. Lost or damages to the key card are subjected to a penalty of up to 600THB per card. If you are prone to losing your keycard, you are more than welcome to hand your card to reception to keep them for you while you are out and about.

STRONG ODOUR GOODS

Items that can produce unpleasant strong smells, i.e. durians, are not allowed on premise as it may cause discomforts for others. Violation shall be subjected to a 2,000THB fine.

COOKING

You are very welcome to cook in your room using the existing kitchen utensils provided. If you wish to use any other kitchen appliances or electronics, please kindly check with the reception first, as some appliances i.e. portable electronic stove that is not properly installed can potentially cause a fire hazard. Please also use trivets and plate mats provided and refrain from putting hot plates down on cold surfaces as this would easily cause damage to the surface.

ON-SITE PARKING

Please kindly park your car in the underground parking lot for your convenience and for security reasons. All guests are welcome to use the parking free of charge whereby security guards and CCTV are in operation. We however take no responsibility for any damage or loss of your vehicle on the car park.

SMOKING

The apartment is entirely non-smoking. Violation shall be subjected to a 5,000THB fine.

BIN STORAGE

Rubbish would be taken care of by housekeepers when room cleaning is being done. However, if there is a need to throw away rubbish more regularly, please place your garbage in an appropriate manner (i.e. in plastic/garbage bags that doesn't have any leakage) and leave them in front of your room.

LOST/ DAMAGED PERSONAL BELONGINGS

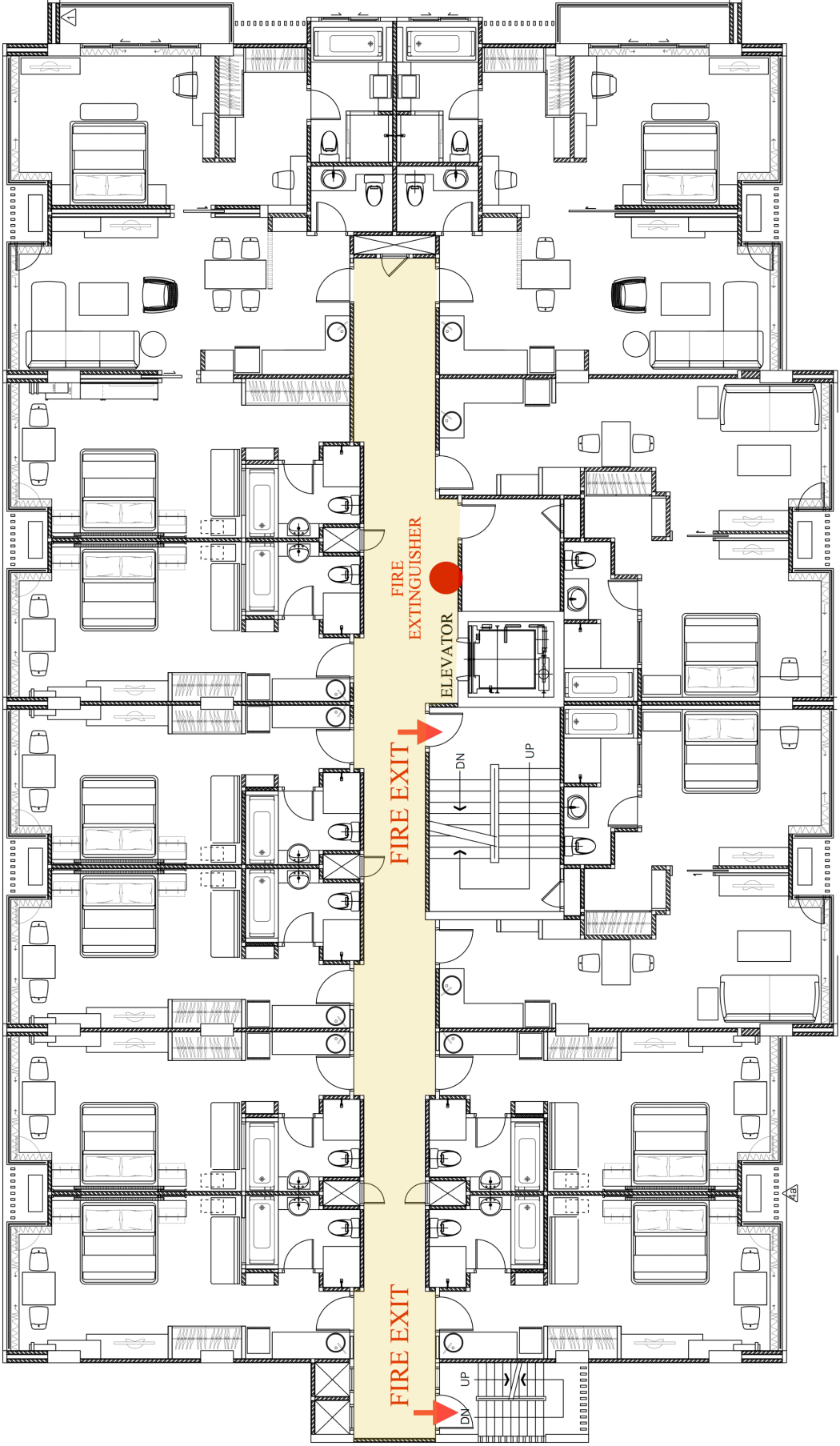
In case of any loss or damages to your personal belongings, please immediately inform reception desk. We will try our best to assist you, however, please kindly be advised that the apartment bears no responsibility for any damages or loss of your personal belongings. If you would like to request a security safe in your room, we can provide it for you for a small charge.

LOST / DAMAGED APARTMENT PROPERTIES

In case of any loss or damages to property goods or fixtures within the apartment caused by you or your parties, you shall be liable for indemnification at the rate assessed by our suppliers / insurance company.

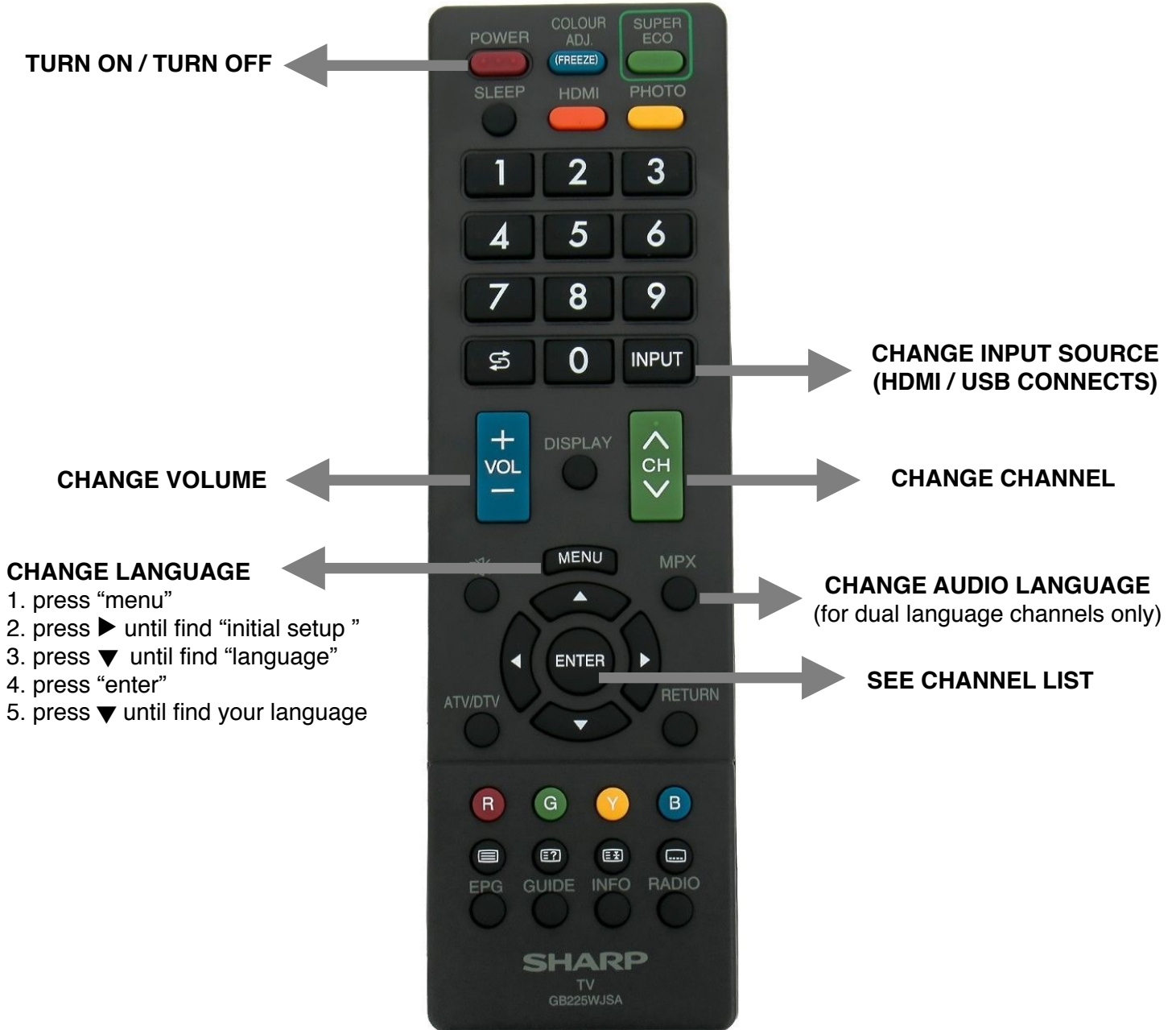
Please refer to your rental agreement contract for a full details.

EMERGENCY EXIT



ELECTRONIC APPLIANCES GUIDES

TV REMOTE GUIDE



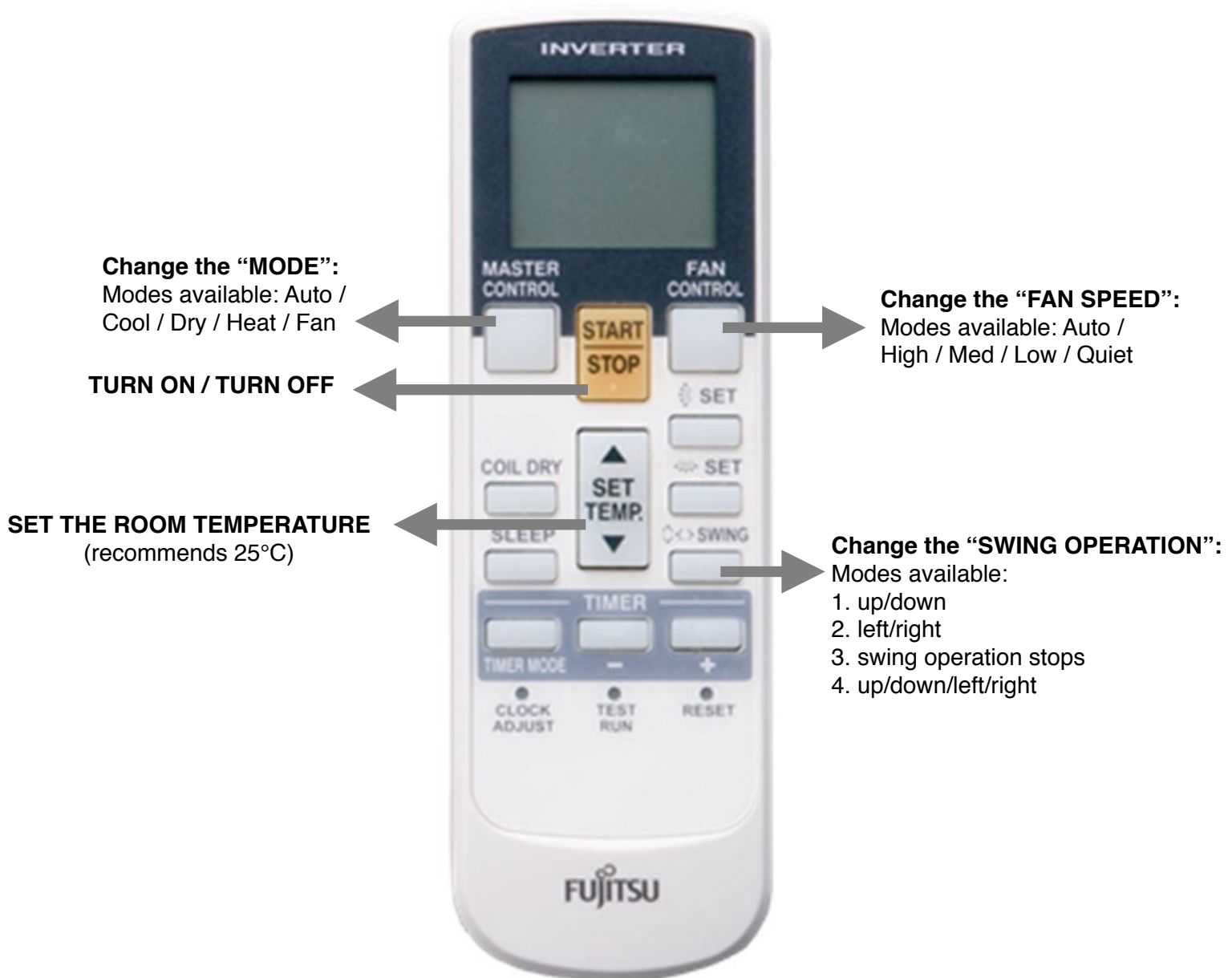
Please see the next page for a full "CHANNEL LIST".

Please be aware that the channel number given in the guideline may not be the same as your TV Channel List. Please press "ENTER" on your remote to find out the accurate channel number.

CHANNEL LIST Digital

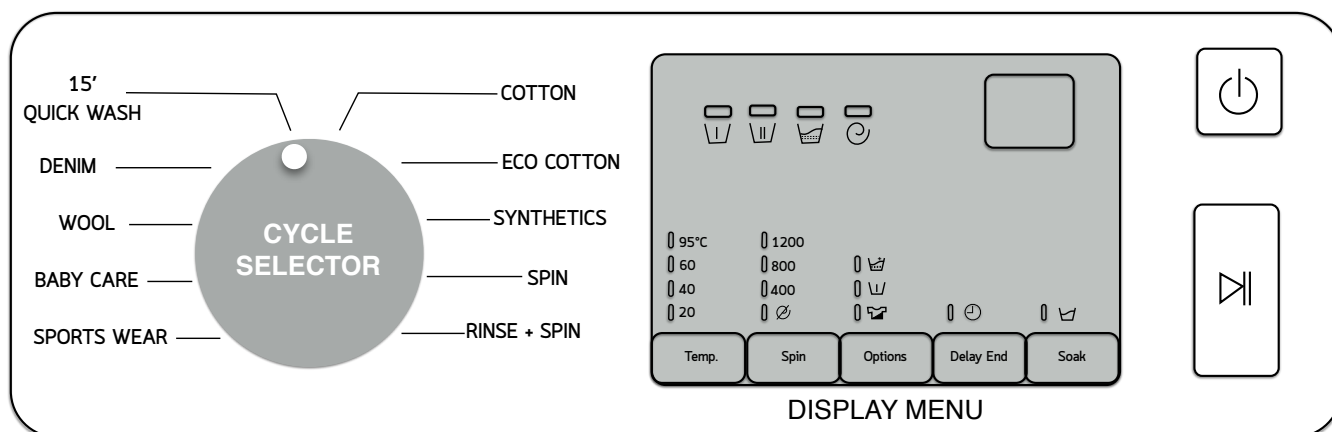
ช่อง	LOGO	รายการ	ช่อง	LOGO	รายการ	ช่อง	LOGO	รายการ	ช่อง	LOGO	รายการ
1		Thai Television 3	46		True Sport 5 Channel	91		Beauty TV Channel	136		DLTV 1
2		Thai Television 5	47		Thaichaiyo Channel	92		Shop Channel	137		DLTV 2
3		Thai Television 7	48		Chiang Mai Live Channel	93		Movies Max Channel	138		DLTV 3
4		Thai Television 9	49		Phawanmai Channel	94		Dee Dee TV Channel	139		DLTV 4
5		Thai Public Broadcasting Service	50		Money Channel	95		Topline Channel	140		DLTV 5
6		NBT Channel	51		Nation Channel	96		Kaset New Channel	141		Dharma TV Channel
7		WETV Channel	52		New TV Channel	97		Smart Movie & Music	142		DLTV 6
8		Inter Movie Channel (Thai Sounds)	53		News1 Channel	98		1618 Shop Channel	143		DLTV 7
9		Movie Sat Asia Channel	54		Peace TV Channel	99		True 4 U Channel	144		DLTV 8
10		Asia Movie Channel (Thai Sounds)	55		Voice TV Channel	100		Most Channel	145		DLTV 9
11		Premium Channel (Sub - Title)	56		Spring News TV Channel	101		Stou Channel	146		DLTV 10
12		Grand Channel (Sub - Title)	57		TNN 24 Channel	102		Jewelry Channel	147		DLTV 10
13		FOX Channel	58		Thairath TV Channel	103		SLNTV Channel	148		DLTV 12
14		Dooptern Channel	59		Zee Nung Channel	104		Daradaily Channel	149		DLTV 13
15		Mono 29 Channel (Thai)	60		Thai Channel 2	105		S Channel	150		DLTV 14
16		KBS World Channel	61		Speed Channel	106		True Inside Channel	151		DLTV 15
17		True Series Channel	62		TV5 Global Channel	107		Tiger Shopping Channel	152		Cinema 1 Channel
18		True Movie Hits Channel	63		Free TV Variety	108		DDTV Channel	153		BVN Channel
19		MONO Plus Channel	64		Now 26	109		Thai CCTV Channel	154		Aniworld Channel
20		True Asia Series Channel	65		PPTV Channel	110		TV Muslim Thailand Channel	155		Fox News Channel
21		True Film Asia Channel	66		3 Family	111		True X-Zyte Channel	156		Sky News Channel
22		M Channel	67		Bright TV Channel	112		Very TV Channel	157		Channel News Asia
23		Major Mix Channel	68		3 SD	113		E San Banhouw Channel	158		NHK English Channel
24		Lotus Channel	69		true music Channel	114		55 Channel	159		NHK Global Channel
25		Golf Channel	70		MCOT Kids&Family	115		Future Channel	160		Arirang Channel
26		Sports Channel	71		ONE HD 31 Channel	116		Living Show Channel	161		Zing Channel
27		True THai Film Channel	72		GMM Channel	117		MAYA Channel	162		Deutsche Welle Channel (English)
28		Siam Sport Live Channel	73		True 4 U Channel	118		K Station Channel	163		TV 5 Monde Channel
29		Mono 29 Channel (Thai)	74		Workpoint TV Channel	119		MANGORN Channel	164		Aljazeera Channel
30		Euro Sport Channel	75		True explore life Channel	120		Muancheon Channel	165		Sahar TV
31		True Sport 7 Channel	76		Amarin Channel	121		Gen C Channel	166		Hunan TV Channel
32		Explorer Channel	77		Miracle Channel	122		24 TV Channel	167		CCTV 4 Channel
33		True Explore 1 Channel	78		INTV Channel	123		Aonson TV Channel	168		CCTV News Channel
34		Travel Channel	79		GoodFilms Channel	124		WISH Channel	169		CCTV Documentary Channel
35		Gang Cartoon Channel	80		สารคดีออนไลน์	125		UMM Channel	170		Russia Today Channel
36		Boomerang Channel	81		Fan TV Channel	126		Movie 24 Channel	171		Sun TV Channel
37		Ja Ting Ja Channel	82		Fashion TV Channel	127		Classic Cinema Channel	172		
38		Boomerang Channel	83		SMM TV Channel	128		Movie Kicker Channel	173		
39		Toonami Channel	84		VTV Channel	129		Movie PK Channel	174		
40		Cartoon Club Channel	85		Joy Knowledge Network	130		R Family Channel	175		
41		H Station Channel	86		TVD Shop Channel	131		ATTV Channel	176		
42		Channel V Thailand Channel	87		TV Shopping Channel	132		SBB TV Channel	177		
43		Sabaidee TV	88		People TV Channel	133		DDTV Channel	178		
44		You Channel	89		40-50 Channel	134		G55 Channel	179		
45		siam sport new Channel	90		SARADEE Channel	135		Lil Champ Channel	180		


AC REMOTE GUIDE



For a detailed guideline, please consult the full manual available on the website:
https://fujitsu-general.com/data/manual/OM_9315345318-03_En.pdf

WASHING MACHINE GUIDE



- 1) **TO TURN ON:** Press  and wait until the blue light on the Display Menu (the grey square box) turns on
- 2) **TO SELECT WASHING MODE:** rotate the Cycle Selector (the grey circle on the left hand side) to the desired mode. Each mode already have a pre-set temperature and spin.

15' Quick Wash (recommended): For lightly soiled garments and under 2kg laundry that you need to be washed quickly. (You should use fewer than 20g of detergent for a 2kg load)

Denim: For washings of jeans and other denim. This cycle washes with a higher water level and an extra rinse cycle that ensures no remaining detergent.

Wool: Only for machine-washable wool. A load should be fewer than 2kg.

Baby Care: This high temperature wash with extra rinse cycle ensure that no powdered detergent remains on the clothes that could harm your baby's skin.

Sports Wear: For sport wears and outdoor clothing. Fabrics for this type of clothing would usually include functional technology finishes and fibres such as spandex, stretch and micro-fibre.

Cotton: For moderately or lightly soiled cottons, bed linen, underwear, towels, and shirts.

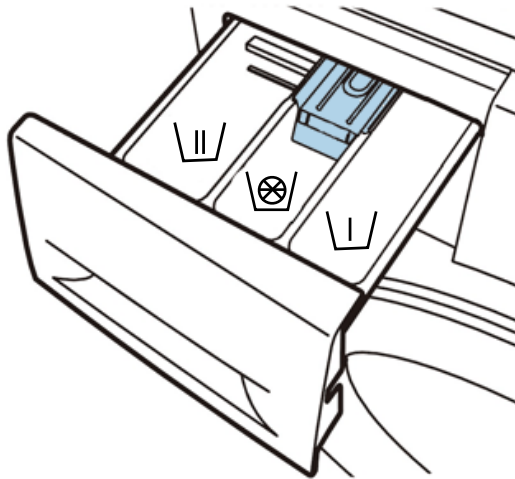
Eco Cotton (recommended): The low temperature eco wash cycle would be similar to a cotton wash, however would ensure an effective energy saving.


Synthetics: For moderately or lightly soiled blouses, shirts, etc. made of polyester, polyamide, or other similar blends.

Spin: Performs an additional spin cycle to remove excess water on your clothes.

Rinse + Spin: For a load that only needs rinsing with pure water (no detergent needed) or for when adding rinse-added fabric softener to a load.

- 3) **(optional) MANUAL MODE ADJUSTMENT:** once done selecting the WASHING MODE, if you would like to further increase/decrease the washing temperature, press on “Temp.”. if you do not want your clothes to be spin (i.e. if the clothes require a high level of care), press “Spin” until the blue light is at the \emptyset sign, or press the “Spin” sign until it reaches the desired spin level.
- 4) **ADDING DETERGENT & SOFTENER:** Add detergent in the \parallel box (left box) and add fabric softener in the \otimes box (middle box) (optional). Please be careful when adding both the detergent and fabric softener, do not exceed the MAX line). Only add additional detergent in the \perp box (right box) if you are selecting “BABY CARE” or “SPORTS WEAR”, as they are the only 2 modes that requires a pre-wash.



- 5) **START WASHING:** Press  to start the washing. (If there is a need to pause, press the same button again. To resume, press the same button once again.)

USEFUL INFORMATION

EMERGENCY CONTACT NUMBERS

Kannas Serviced Apartment: +66 (0) 53-218-873 or +66 (0) 61-265-8080

Phone Directory Service: 1113

Emergency Call: 191

Medical / Ambulance Emergency: 1669

Tourist Police: 1155

Tourist Service Centre: 1672

WIFI

Please select “KANNAS” or “KANNAS-5ghz” Wi-Fi Network in which the log-in window should pop up. If the log-in window does not pop up, open an Internet Explorer, a Google Chrome or a Safari webpage and key in any website URL such as <http://www.thekannas.com> (do not use: www.google.com or any webpage starting with <https://>) in which the log in portal should appear (iBSG 3.5 log-in). Key in the log-in username and password given by the reception and click “Login”. Any problems with the log-in please contact reception.

MAINTENANCE

If there are any issues or additional helps needed with your apartment, please directly contact reception desk. We will try our best to send help straight away.

LETTERS / POSTAL ADDRESS

Your postal address here is:

Name, Room Number

Kannas Serviced Apartment, 308, Moo 3, Tumbon Changpuak,

Amphor Muang Chiang Mai, Chiang Mai, 50300, Thailand

All letters and parcels will be stored at the reception desk. We will inform you in person or via phone calls if there is anything for you.

ADDITIONAL SERVICES

LAUNDRY

1) Self-Service Coined Laundry (*recommended for daily usage*)

Our self-service coined washing machine (20THB/use) and drying machine (40THB/use) is located on floor 7. Please feel free to use the machine at your convenience.

2) Washdrop (*recommended for a lot of washing*)

Their service is charged per kilogram, has no minimum order sizes and is collection&delivery free-of-charge. There are 3 pricing options available for clothes washing; 50THB per KG (returned in 48 hours), 70THB per KG (returned in 24 hours) and 100THB per KG (returned in 6 hours). Additional price applies for ironing and shoe washing service. For more information, please visit www.washdrop.co

SELF - STORAGE SERVICE

1) Kannas Serviced Apartment

You are more than welcomed to leave a few of your belongings with us for a small charge in which the items will be stored in a secured room. For more information, please contact reception.

2) Chiang Mai Buddy Box Storage (recommended for a few months storage of large items)

Price ranges from 200THB / month (small 24inches*24inches box) to 500THB / month (1 large suitcase). For more information, please contact +66 52 080 715 or visit <https://chiangmaibuddy.com/services-and-products/luggage-and-box-storage-service/>

TRANSPORTATION

1) **Uber / Grabtaxi** (*highly recommended*)

Like in many other cities, Uber is still one of the best choice to go for. Simply download the app on App Store or Google Play. Please book the service in advance or else you may have to wait for 10-30 minutes.

2) **Private Taxi Service** (*recommended for full day trips*)

Taxi Kingdom: 094-620-5134

Taxi Chiangmai Guide: 088-774-3795, 098-825-6652

Or please simply contact us via reception.

3) **Songtaew Red Cars** (*recommended for use within the city area i.e. old town, huay kaew, the moat, nimman area*)

Songtaew (Red cars) is one of the highlights in Chiang Mai that you should experience. They are similar to buses where multiple parties can take the ride at once, however, there are no clear routes as to where they are going. If you are their first customer, the decision to pick up other customers will depend on your route, vice versa. So do not feel offended if they rejected you for the ride. Price usually ranges around 30 - 100 THB per person for short trips. Unfortunately, there are not a lot of Songtaew passing by Kannas Serviced Apartment (we are on our way to get more of them to come though!), however you could certainly find them in Nimmanhaemin, Old Town, Huay Kaew and anywhere around the moat.

4) **Car Rental** (*recommended for those familiar with driving in Thailand*)

Chic Car Rental: contact 02-286-6799

Hertz Rent a Car: contact 02-266-4666

Avis Car Rental: contact 02-251-1131

THE KANNAS DIRECTORY

ร้านค้าในโครงการ เดอะ แคนนาส ช่วงสิงห์

RESTAURANTS



KAOTORN KAOLAENG

THAI RESTAURANT

Opening Hours: Wednesday - Monday
(Closed Every Tuesday)
10.00 - 14.00 & 17.00 - 21.00



BHAKTI BRUNCH & BISTRO

French Restaurant

Opening Hours: Tuesday - Sunday
(Closed Every Monday)
7.00 - 14.00 & 18.00 - 21.00



LAPIN CAFE

Italian Restaurant

Opening Hours: Thursday - Tuesday
(Closed Every Wednesday)
7.30 - 21.30

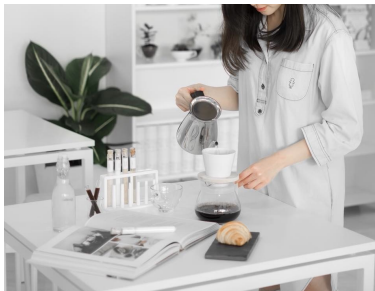
LIFESTYLE & CAFE



ARTISTIC LAB

Perfume | Skincare | Workshops

Opening Hours: Thursday - Tuesday
(Closed Every Wednesday)
10.00 - 19.00



ARTISTIC LAB

Bakery | Tea | Coffee

Opening Hours: Thursday - Tuesday
(Closed Every Wednesday)
10.00 - 19.00



GATTOCHA

Bubble Tea | Iced Drinks

Opening Hours: Everyday
9.00 - 18.00

HEALTH & SERVICES



SURF SWEAT

Fitness Studio

Opening Hours: Monday - Saturday
(Closed Every Sunday)
10.00 - 21.00



MINI BIG C

Convenience Store

Opening Hours: Everyday
24 Hours



PHARMACY

ร้านขายยา

Opening Hours: Everyday
07.00 - 24.00

NEARBY

As we are located right alongside the Superhighway Road, we are proud that you will not have problems commuting to and from major sites in Chiang Mai as we are under 15-minutes drive away from the trendy Nimmanhaemin road, naturally adventurous Maerim District, International convention and government centers, and prestigious universities campus.

Nearby Attractions

- Chiang Mai National Museum (3 minutes walk)
- Wat Chet Yot (10 minutes drive)
- Nimmanhaemin Road (15-30 minutes drive, purely depends on the traffic)
- Doi Suthep National Park (30-40 minutes drive)
- Tiger Kingdom (30 minutes drive)
- Wat Phrasingh / Wat Chedi Luang (20 minutes drive)
- Old City (20 minutes drive)

Nearby Recreational

- Maya Mall (15-30 minutes drive, purely depends on the traffic)
- Lanna Golf Course (10 minutes drive)
- Rama 9 Park / 700th Stadium Park (5 minutes drive)
- Go Gym / O2 Gym (3 minutes drive)
- Central Festival Mall (15 minutes drive)
- Meechok Plaza Community Mall (15 minutes drive)

Nearby Business Centres / Education Centres

- CNX International Convention Center (10 minutes drive)
- Provincial Government Offices (15 minutes drive)
- Northern Region Industrial Estate (Lamphun) (40 minutes drive)
- Chiang Mai University (25 minutes drive)
- Chiang Mai Rajabhat University (10 minutes drive)
- Rajamangala University of Technology Lanna (25 minutes drive)



To San Kamphaeng

Chiang Mai Railway

Bus Arcade

Warorot Market

Tha Phae Rd.

Chiang Mai Old City

Rajabhat University

Lanna Hospital



Thepanya Hospital



Central Festival Shopping Mall



Tesco Lotus



Meechok Plaza



To Maerim

Khuang Singh Intersection

Thanin Fresh Market



National Museum

Wat Ched Yot



Chiang Mai Hospital



Lanna Golf Course



Rama 9 Public Park

Highland People Discovery Museum



700th Stadium



Convention Center



To Doi Suthep

Rajamangala University



Chiang Mai University



Maya Shopping Mall



Kad Suan Kaew Shopping Mall



Central Airport Plaza



Chiang Mai Int'l Airport



Nimmanhaemin Road

